



2-D Electrophoresis Solutions

- Complete 2-D System that Enables the Fastest Runs with the Clearest Spots
- The Only 2-D System able to Monitor Each Individual IPG Strip in Real Time with Graphical Display

IEF Unit



Complete 2-D Packages



Large Vertical Unit



Mini Vertical Unit



Accessories



Deluxe Vertical Unit

IEF100 First-dimension Isoelectric Focusing Unit

Monitor current flow for each individual IPG strip in real time

- 9 editable preloaded protocols included
- Can store up to 30 protocols
- Flexible first-dimension IEF can be run with up to six 7 to 24 cm IPG strips simultaneously
- Turn and click intuitive user interface with graphical display
- Capable of faster run times with an integrated 12,000 V power supply that has the highest voltage and current commercially available
- Easily accessible Ethernet and RS232 ports

The IEF100 is the only first dimension instrument that controls the current and voltage applied to the IPG strips to prevent overheating.

Features and Benefits

Cup-loading or rehydration-loading—versatility to accommodate individual sample requirements

Instrument control through LAN—remote control and data acquisition possible

Integrated power supply and Peltier cooling—minimizes footprint

Constant power mode—minimizes overheating risks

Ultra high voltage and current—reduces focusing time and enhances focusing results

Focusing tray clamped to cooling plate—ensures efficient heat transfer

Electrodes lock into place on strips—ensures good contact during run

Front data ports—enable recording of instrument performance if required by GLP

Entire protocol can be seen on screen—easy to read and edit

Large display—provides real-time graphical results

Stores multiple protocols each with multiple steps—flexible programming for precise results

Technical Specifications

Voltage	12,000 V
Resolution	1 μ A
Sample Cup Capacity	240 μ l
Unit Dimensions (w x h x d)	38 x 19 x 27 cm
Data Connectivity	Ethernet / RS232
Current	10 mA (999 μ A/strip)
Platform Temperature	15-25°C (Peltier Controlled)
Trays	Running and Rehydration Tray
Weight	6 kg
Safety Certifications	EN61010-1, UL61010-1, CSA22.2 1010.1, CE

Ordering Information

Cat. #	Description
IEF100	Isoelectric Focusing Unit
	Includes: 252 Wicks, 1 Running Tray, 1 Rehydration Tray, 1 Cleaning Brush, 1 Set of Forceps, and 10 Sets of Running Cups (Each Set Containing 6 Sample Cups)



Isoelectric Focusing (IEF) Separation of Mouse Liver using Hofer IEF100 and 4-7 IPG Strips

Image courtesy of Professor Peter James and Dr. Sofia Waldermarson, Department of Immunotechnology, Lund University, Sweden

Reference Paper Available

"A Device for Isoelectric Focusing of IPG Gel Strips"

To receive your copy visit our website:
www.hoferinc.com

SE900 Large Format Vertical Gel Electrophoresis Unit

For highly reproducible second-dimension separations on up to six 28 cm SDS-PAGE gels

The SE900 was designed as a dedicated unit for second dimension electrophoretic separation. It can accommodate up to six 28 cm SDS-PAGE gels which mirrors the throughput of the IEF100 (6 IPG strips). If desired, the unit will accommodate plates of similar size made by other manufacturers.

Features and Benefits

No upper buffer chamber—no gasket issues and no risk of buffer loss

Utilizes minimal parts—easy to use and reliable

External cooling and internal buffer circulation—ensures an even, constant, and uniform temperature for reproducible results

Up to six 28 cm plates can be run at one time—perfect for high throughput applications

Glass plate sandwiches are hinged cassettes—allows for rapid and easy assembly before use

Built-in draining port—avoids lifting of a heavy buffer-filled tank

Assembly of the tank is easy—no clamps needed

Innovative design enables re-use of tank buffer—decreased buffer consumption for reduced cost

Technical Specifications

Gel Plate Size	28 x 21 cm (w x h)
Gel Size	25 x 20 cm (w x h)
Maximum Power Settings	600 V, 1000 mA, 150 W
Maximum Temperature	45°C
Humidity	Up to 80%
Unit Dimensions (w x h x d)	43 x 43 x 20 cm
SE900 Rating	100-240 V, 50-60 Hz, 2A
Buffer Pump	50,000 hour pump life
Weight	13.6 kg
Safety Certifications	EN61010-1, UL61010-1, CSA22.2 1010.1, CE

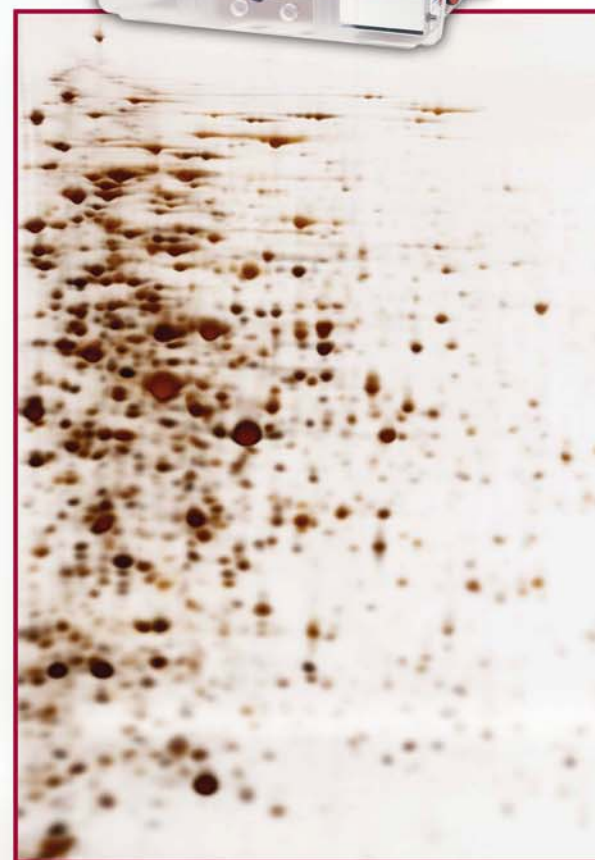
Ordering Information

Cat #	Description
SE900-1.0	Large Format Vertical Electrophoresis Unit, Complete
SE900	Large Format Vertical Electrophoresis Unit, Basic

Complete Unit Includes:

- Separation Tank
- Lid with High Voltage Leads
- Gel Rack
- Multiple Gel Caster
- Hinged Glass Cassettes—6 pcs

Basic Unit Includes: The same as above without the multiple gel caster and hinged glass cassettes.



Corynebacterium Glutamicumcell lysates separated using the Hoefer 2-D System and 4-7 IPG Strips

Image courtesy of Professor Angelika Görg, Technical University of Munich, Germany.

SE600X Chroma™ Deluxe Dual Cooled Vertical Unit

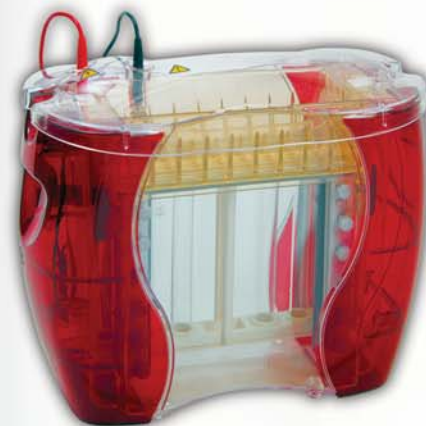
Ergonomic design offers easier handling
and sample introduction

Technical Specifications

Glass Plate Size (w x h) 18 x 16 cm or 18 x 8 cm
 Spacers 0.75 mm, 1.0 mm, 1.5 mm
 Maximum Power Settings 1000 V, 500 mA, 50 W
 Maximum Temperature 45°C
 Indoor Use 4-40°C
 Humidity Up to 80%
 Unit Dimensions (w x h x d) 32 x 29 x 14 cm
 Safety Certifications EN61010-1, UL61010-1, CSA C22.2 1010.1, CE

Cat. #	Description
SE600X-15-1.5	Deluxe Dual Cooled Vertical Electrophoresis Unit, Complete

Includes: 1 Unit, Dual Gel Caster, 6 Glass Plates, 2-15 well 1.5 mm combs, and 4-1.5 mm spacers



SE260 Mighty Small II Deluxe Mini Vertical Electrophoresis Unit

Combines the advantages of small format and efficient
cooling for rapid screening

Technical Specifications

Glass Plate Size (w x h) 10 x 10.5 cm or 10 x 8 cm
 Spacers 0.75 mm, 1.0 mm, 1.5 mm
 Maximum Power Settings 500 V, 500 mA, 12 W
 Maximum Temperature 45°C
 Indoor Use 4-40°C
 Humidity Up to 80%
 Unit Dimensions (w x h x d) 16.5 x 18 x 16 cm
 Safety Certifications EN61010-1, UL61010A-1, CSA C22.2 1010.1, CE

Cat. #	Description
SE260-10A-.75	Mighty Small II Deluxe Mini Vertical Electrophoresis Unit, Complete

Includes: 1 Unit, Dual Gel Caster, 10 Glass Plates, 5 Notched Alumina Plates, 2-10 well 0.75 mm combs, and 4-0.75 mm spacers



PS300B 300 Volt Power Supply

The versatile PS300B is designed for most
electrophoresis techniques

Convenient and Simple

The small footprint, large handle, and simple operation makes the PS300B easy to set up and use in your lab. With the large, easy to read LED, simply set the constant parameter, set the timer (if desired), and push start.

- Constant voltage or constant current mode with automatic crossover
- 10-300 V, 4-500 mA, 90 W

Cat. #	Description
PS300B	300 Volt Power Supply, Universal VAC



Complete 2-D Electrophoresis Packages

Integrated 2-D electrophoresis systems and combination packages

Mini 2-D Electrophoresis System

Ordering Information

Cat. #	Description
526003	Mini 2-D Combination Package
	Package Includes:
IEF100	Isoelectric Focusing Unit
SE260-10A-.75	Mighty Small II Mini Deluxe Vertical Unit
SE2619T-2-1.0	T-Spacers, 1.0 mm Thick (qty. 2)
PS300B	300 V, 500 mA, 90 W Power Supply



Standard 2-D Electrophoresis System

Cat. #	Description
560003	Standard 2-D Combination Package
	Package Includes:
IEF100	Isoelectric Focusing Unit
SE600X-15-1.5	Deluxe Dual Cooled Vertical Unit
PS300B	300 V, 500 mA, 90 W Power Supply



Large 2-D Electrophoresis System (Classic)

Cat. #	Description
E2DCLASSIC	Large 2-D Combination Package
	Package Includes:
IEF100	Isoelectric Focusing Unit
SE900	Large Format Vertical Electrophoresis Unit

Large 2-D Electrophoresis System (Elite)

Cat. #	Description
E2DELITE	Large 2-D Combination Package
	Package Includes:
IEF100	Isoelectric Focusing Unit
SE900	Large Format Vertical Electrophoresis Unit
SE9102-1-1.0	Large Hinged Glass Cassettes (qty. 6)
SE915	Large Multiple Gel Caster



Large 2-D Electrophoresis System w/Power Supply

Cat. #	Description
590003	Large 2-D Combination Package w/P.S.
	Package Includes:
IEF100	Isoelectric Focusing Unit
SE900	Large Format Vertical Electrophoresis Unit
SE9102-1-1.0	Large Hinged Glass Cassettes (qty. 6)
SE915	Large Multiple Gel Caster
PS265-115V	600 V, 500 mA, 150 W Power Supply



84 October Hill Road
Holliston, MA 01746-1388 USA
Toll Free: (800) 227-4750
Tel: +1 (508) 893-8999
Fax: +1 (508) 429-5732
E-mail: sales@hoeferinc.com
Web: www.hoeferinc.com

©Copyright, Hoefer®, Inc. 2009 Printed in USA
Hoefer® is a registered trademark of Hoefer, Inc.
Chroma™ is a trademark of Hoefer, Inc.
SERVALYT™ is a trademark of SERVA

For Large 2-D Electrophoresis System with 230 VAC power supply, order part number 590003-230V